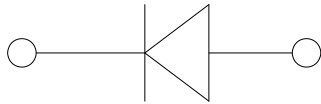


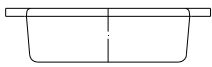
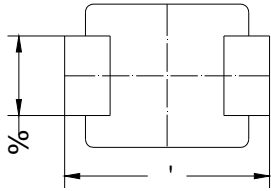
)RU XVH LQ KLJKFIMHILXFDWLRQHR SRZHU
VXSSOLHV LQYHUWHUV FRQYHUWHUV DQG
FRQVXPHU DQG WHOHFRPPXQLFDWLRQ



" 60%)
0ROGLQJ FRPSRQG PHHWDPPDELOLW\
UDWLQJ 5R+6 FRPSOLDQW KDORJHQ IUHH
" 81,7

			+6 \$%	+6 %%	+6 '%	+6)%	+6 *%	+6 -%	+6 .%	+6 0%)
'HYLFH PDUNLQJ FRGH			+6 \$%)	+6 %%)	+6 '%)	+6)%)	+6 *%)	+6 -%)	+6 .%)	+6 0%) +6
0D[LPXP 5SHHWLWLYH 3HDN 59558 UUVH99ROWDJH										
0D[LPXP 506 9ROWDJH	9506	9								
0D[LPXP '& EORFNLQJ 9ROWDJH'&		9								
\$YHUDJH UHFWLILHG RXWSXW FXUUHQW # +] VLQH ZDYH UHVLVWDQFH 'ORDG \$7/)LJ										
)RUZDUG 6XUJH &XUUHQW 1RQ UH\$HHLWLYH # +] +DOI VLQH ZDYH - F\FOH 7M										
)RUZDUG 6XUJH &XUUHQW 1RQ'U\$HHLWLYH \$ # PV VTXDUH ZDYH - F\FOH 7M										
&XUUHQW VTXDUHG WLPH # PV"W" PV 7M5DWLQJ RI SHU 'GLRGH \$V										
7\SLFDO MXQFWLRQ FDSDFLWDQFH #0HDVXUH DW 0+] DQG \$\$\$OLHG 5HYHUVH 9ROWDJH RI 9' &										
6WRUDJH WHPHUDWXUH	7VWJ	-								a
-XQFWLRQ WHPHUDWXUH	7M	-								a

60%)



'LPHQVLRQV LQ PLOOLPHWHUV

